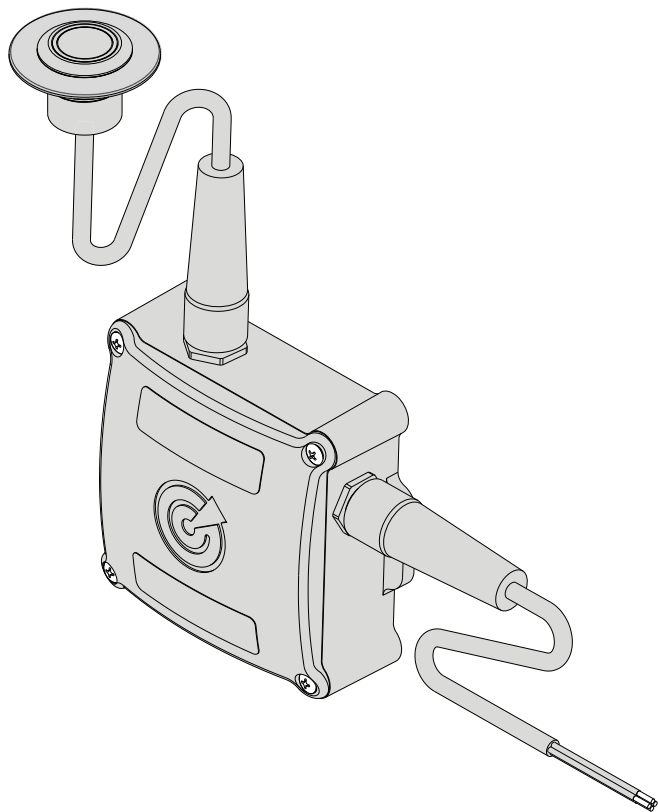
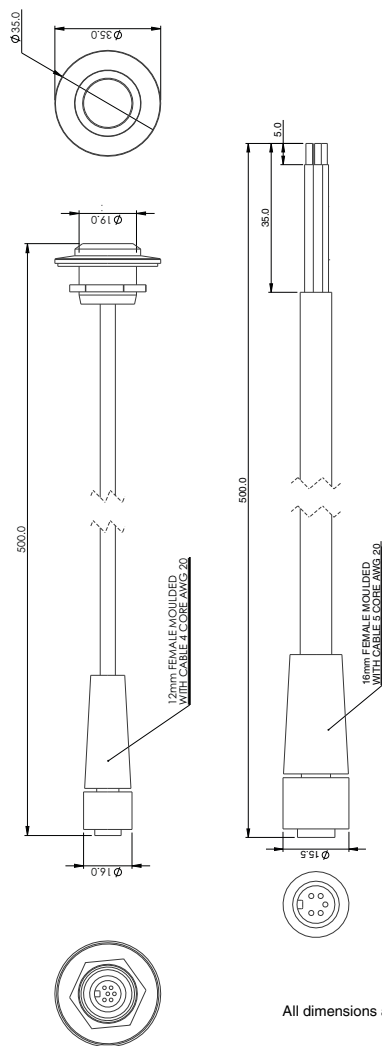


EXPOSURE GLASS



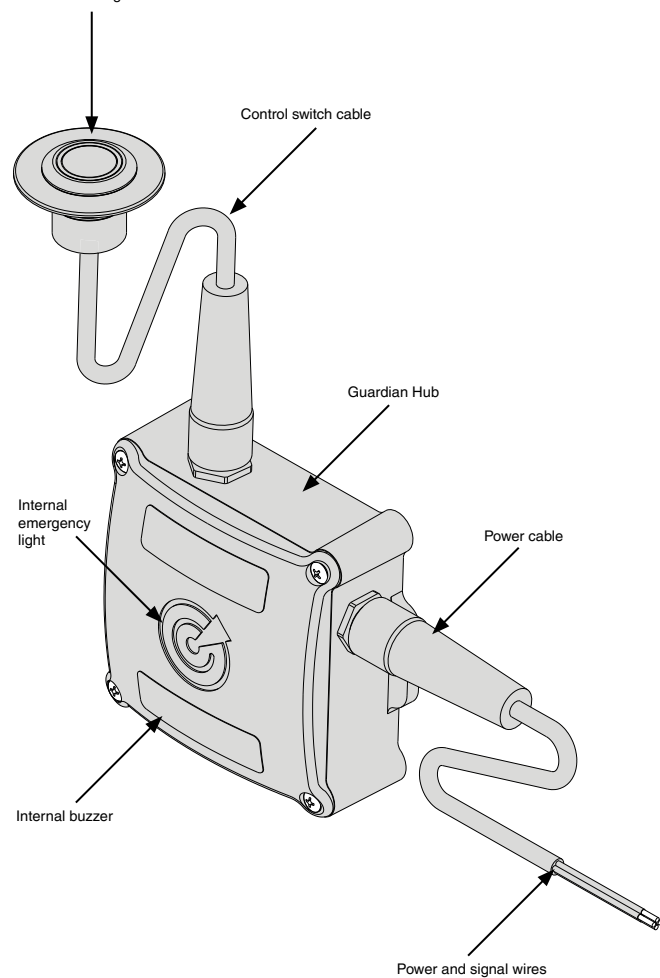
WIRELESS
SAFETY

GUARDIAN



All dimensions are in mm

Control Switch with green and red indication LED



OLAS TRANSMITTERS

The OLAS T2, OLAS Tag and OLAS FLOAT-ON are considered OLAS transmitters. They emit a Bluetooth signal which is monitored by the OLAS receivers. The Guardian is supplied with the OLAS Tag transmitter.

OLAS RECEIVERS

The OLAS receivers track the OLAS transmitters. OLAS receivers are:

1. Guardian
2. OLAS N2K
3. Core
4. OLAS Mobile application
5. Extender - This operates as a repeater to increase the range of the OLAS N2K, Guardian and Core

OLAS MOBILE APPLICATION

The OLAS mobile application allows the OLAS transmitters to be used as a MOB/proximity alarm if used solely with OLAS transmitters. When an OLAS transmitter goes out of range an alarm is set off and overboard screens are activated.

When the OLAS mobile application is connected to the OLAS N2K, Guardian or Core it allows greater control over the OLAS transmitters that are being tracked.

For iOS search for 'OLAS: Wireless Marine Safety' on the App Store.

For Android search for 'Exposure OLAS – MOB Alert' on the Google Play Store.

IMPORTANT INFORMATION

The Guardian has been designed for recreational marine use. The design conforms to appropriate Electromagnetic Compatibility (EMC) regulations but for optimal performance correct installation is required. For optimum performance the mobile device and the Guardian should be located at least 0.5 metres from any equipment transmitting radio signals including VHF Radios, antennas and cables.

- Extension cable set is. P/N: EXPOLASGUARDEXT

GUARDIAN INSTALLATION

WARNING: Do not attempt to install the Guardian until you know that the power supply is switched OFF. Where required use the supplied wire connectors which are suitable for connecting wire dimension 20-18AWG. If wire extensions are required use 20AWG or thicker wire.

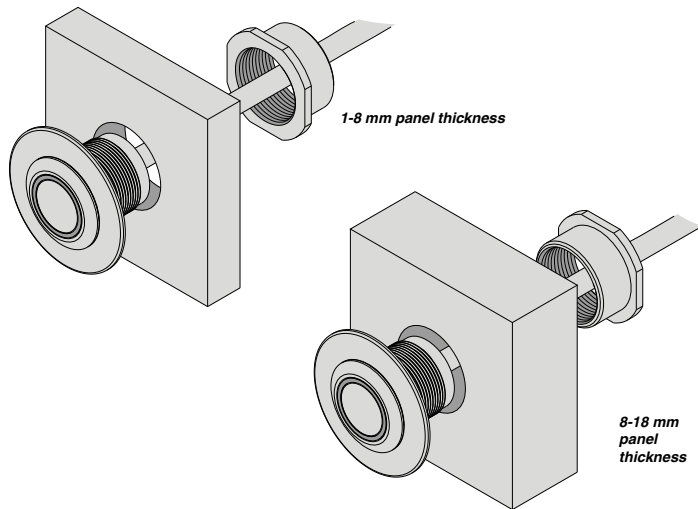
Ensure all wire connections are waterproof using marine specific connectors, such as heat shrinkable butt splices.

1. The control switch mounting location should be within 0.5 metres of the Guardian hub.
2. For connection into the engine stop system the Guardian hub will need to be within 0.5 metres of the existing stop switch or associated wires. The wires from the Guardian engine cable can be extended with 20AWG or thicker wire. Ensure a watertight connection by using waterproof connectors.

CONNECTING THE CONTROL SWITCH

1. If connecting the Guardian into the vessels existing kill switch system, it is advised to mount the control switch near to the existing kill switch.
2. Drill a 21mm (0.8") diameter hole. **Tip:** If using a hole saw, placing masking tape over the area to be cut can help produce a smooth edge.
3. Ensure the control switch is mounted securely. If the panel thickness is greater than 18mm a longer nut is available for panel thickness up to 30mm P/N :EXPGUARDSWITCHNUTLONG.
4. Connect the control switch to the Guardian hub.

Switch the orientation of the securing nut shown below, dependent on panel thickness:



CONNECTING THE POWER WIRES (10-32VDC)

Connect power cable to Guardian hub.
Ensure Power supply is switched OFF.

1. Connect the white (+ or positive) wire to the positive voltage terminal
2. Connect the black (- or ground) wire to the negative voltage terminal
3. Install a 1-3 A fuse in line with the positive connection

The Guardian uses a double throw relay enabling it to open or close any circuit. It is advised to connect the Guardian in addition to your existing kill switch. It can be used to perform the same engine stop function.

NOTE: The Guardian relay is rated to maximum 2 Amps.

CONNECTING THE SIGNAL WIRES ALONGSIDE YOUR EXISTING KILL SWITCH

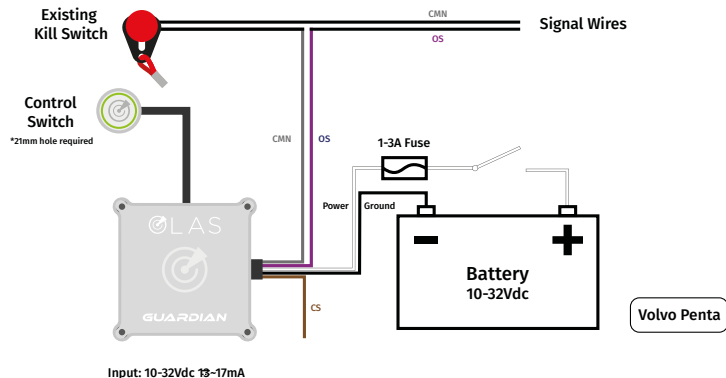
1. Check with your engine manufacture if the kill switch is operated by closing the circuit or opening the circuit. Most engines operate by closing the circuit to stop the engine. Close to stop systems should connect in parallel to your existing kill switch. Open to stop systems should connect in series to your existing kill switch.
 2. There are 3 signal wires: Grey= COMMON Brown = CLOSE TO STOP Purple = OPEN TO STOP
 3. Connect the grey wire to the existing kill switches common wire
 4. Connect the brown wire to the remaining kill switch wire if your system uses the close to stop system
 5. Connect the purple wire to the remaining kill switch wire if your system uses the open to stop system
- NOTE:** ONLY two signal wire should be connected
6. Close off the remaining wire with the supplied end cap

SECURE THE GUARDIAN HUB

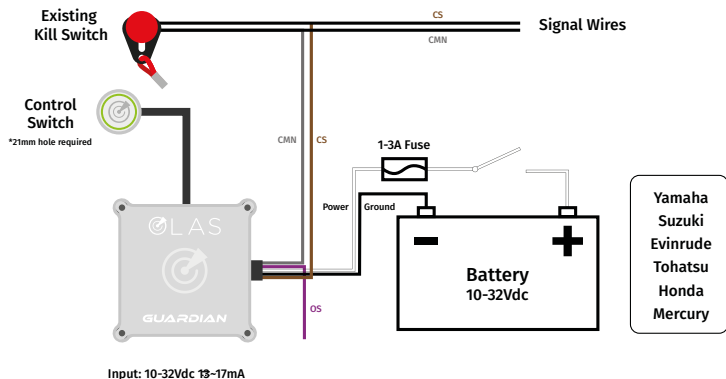
1. Find a location where the hub can be securely attached, and the power and switch wires can remain securely attached to the hub.
2. The attachment screws provided are self-tapping for plastic / wood so can be screwed directly into the center console. Ensure the attachment point is thicker than the attachment screws to avoid screwing through the panel.
3. Secure the hub firmly into the center console. Wiring diagram on page 7.

For connection of up to 3 x outboard motors the accessory P/N: EXPOLASMEC can be used.

OPEN TO STOP



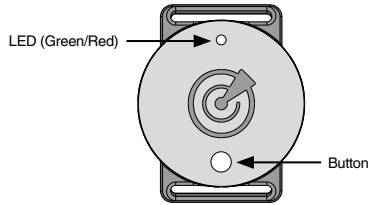
CLOSE TO STOP



White — Power
Black — Ground

Purple — Open to stop (OS)
Brown — Close to stop (CS)
Grey — Common (CMN)

OLAS TAG OPERATION



Switch ON:

Press the button for 4 seconds until the light flashes Green

Switch OFF:

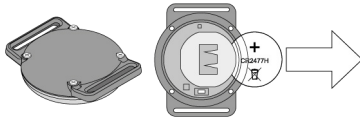
Press the button for 4 seconds until the light flashes Red

Replacing the battery

DO NOT dispose of batteries in fire. Batteries should be recycled or disposed of as per your local guidelines.

Replace the lid ensuring the silicone insert is not damaged and the screws go through the holes correctly. DO NOT overtighten the screws.

DO NOT remove the screws from the base



WARNING

This product contains a button battery

If swallowed, a lithium button battery can cause severe or fatal injuries within 2 hours.

Keep batteries out of reach of children.

If you think batteries may have been swallowed or placed inside any part of the body, seek immediate medical attention.

GUARDIAN QUICK START GUIDE

1. Check the OLAS Tag is switched OFF.
2. Ensure the Guardian is connected to the control switch and the power cable.
3. Switch the vessels batteries ON, powering the Guardian.
4. The Guardian will beep once to indicate switching ON.
5. If there are no OLAS transmitters in range the Guardian hub will beep every minute and the control switch will flash red/green. Note: if the control switch illuminates green and the Guardian hub beeps once it means the OLAS Tag is still switched ON and has been automatically tracked, skip to point 8.
6. Switch the OLAS Tag ON by pressing its button for 4 seconds. Hold the OLAS Tag close to the Guardian. The Guardian hub will beep twice and the control switch will flash red twice to indicate the tag has been tracked. If you do not hear the double beep move the OLAS Tag closer to the Guardian.
7. After the double beep on the Guardian the control switch will illuminate green. The system is now operational and the OLAS Tag is being tracked.

OLAS MOBILE APP SETUP



Apple App Store

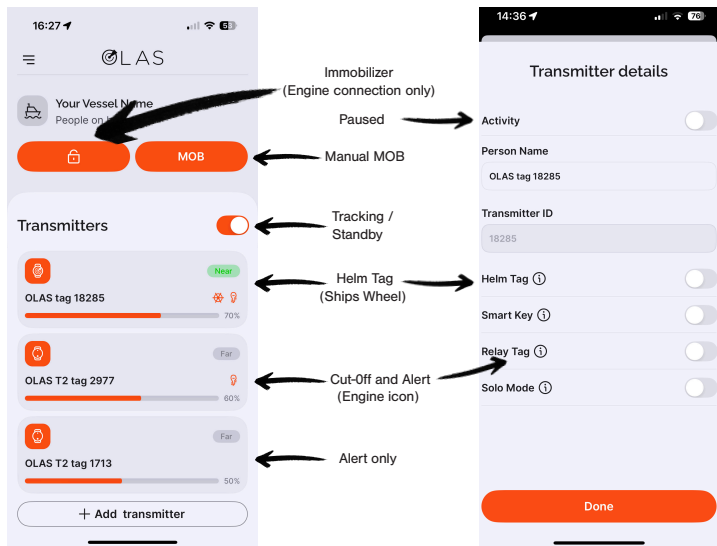


Google Play Store

8. Download the Exposure OLAS mobile app from the Apple App Store or Google Play.
9. Open the App and move to device selection page.
10. Click on the Guardian icon.
11. Follow the instruction pages and move to the home screen.
12. You are now connected to the Guardian and the home screen is displaying the OLAS Tag information.
13. If you are primarily using the Guardian as an MOB engine cut off system it is highly recommended to set your tag up as a Helm Tag to simplify the connect and disconnect process.

OLAS TRANSMITTER OPERATING STATES

There are 3 operating states which can be applied to the OLAS Tag (and any other tracked OLAS Transmitters) using the OLAS mobile app. The operating state will be stored on the OLAS Guardian until it is changed using the OLAS mobile application.



1. Helm tag

Helm Tag Mode: Designed for sub-35ft motor vessels, this kill cord mode stops the vessel if the tag exceeds a set distance from the hub. It allows leaving and returning without triggering the MOB alarm. It does not activate MOB alerts and is not intended as a MOB alarm system.

2. Cut-off and Alert (RELAY tag)

When an OLAS transmitter goes out of range, within 2 seconds the Guardians relay will cut-off the engine, sound its internal alert and trigger the MOB alert on the OLAS app. After 7 seconds the engine can be restarted by anyone remaining on the vessel.

3. Alert only

When an OLAS transmitter goes out of range, within 2 seconds the Guardian will sound its internal alert and trigger the MOB alert on the OLAS mobile app. The engine will NOT cut-off and a rescue can be performed immediately. This mode should only be used for passengers.

4. Tracked / Untracked

Press the Activity toggle to stop tracking a transmitter if you no longer want the Guardian to react if the transmitter goes out of range or is switched off. This will remove it from the home screen. Use the + Add transmitter button to start tracking the transmitter again.

OPERATION MANUAL

Index

1. Start up or returning to the vessel
2. No OLAS transmitter Warning
3. Setting up a helm tag
4. Tracking a new OLAS transmitter
5. Tracking a previously tracked OLAS transmitter
6. Tracking an OLAS transmitter using the OLAS mobile app
7. Checking logged OLAS transmitters (without the OLAS mobile app)
8. Checking logged OLAS transmitters (with the OLAS mobile app)
9. OLAS Mobile app features (basic)
10. Standby Mode
11. Switching OFF the OLAS Guardian
12. Stop tracking an OLAS transmitter (without the OLAS mobile app)
13. Stop tracking an OLAS transmitter (with the OLAS mobile app)
14. Low battery alert
15. Default recovery mode
16. OLAS Mobile app features (advanced)
 - a. Detection Time
 - b. Alert Delay
 - c. Solo Mode
 - d. Overboard recovery aids
17. OLAS Smart Lock
18. Limitations

1. START UP OR RETURNING TO THE VESSEL

- Switch the vessel's batteries ON, or press the control switch once.
- The OLAS Guardian will beep once to indicate switching ON.

2. NO OLAS TRANSMITTER WARNING

- If there are no OLAS transmitters in range the OLAS Guardian hub will beep every minute and the control switch will flash red/green.
- After the first minute it will beep eight times. Thereafter every minute the number of beeps will increase by two until the OLAS Guardian is beeping continuously.
- To move to tracking state an OLAS transmitter needs to be switched on and moved into range.
- If an OLAS transmitter is not present the control switch or OLAS app can be used to put the system into Standby by toggling the Transmitters button on the home screen or by pressing the control switch for 2 seconds. The control switch will illuminate solid red whilst in Standby. A single press of the control switch will reactivate Tracking mode.

3. SETTING UP A HELM TAG

Using the OLAS mobile application,

- Press the tag you want to become the helm tag.
- Press the Helm Tag toggle
- Hold your tag in the area where you would normally be driving your vessel. Calibrate the distance between your transmitter and the Guardian.
- Select the appropriate sensitivity either in Alert settings or in the tag settings.
- Low sensitivity allows the tag to move far from the hub before the engine is stopped.
- Very high sensitivity means the engine will stop without moving the transmitter far from the hub.
- Always test the setup before leaving the Dock.

4. TRACKING A NEW OLAS TRANSMITTER

- To track a new OLAS transmitter it needs to be switched on and brought into 'Close' range of the OLAS Guardian hub. This is around 0.5 metres. If it is not automatically tracked move it closer to the OLAS Guardian hub.
- Once the OLAS transmitter is automatically tracked the OLAS Guardian hub will beep twice.

5. TRACKING A PREVIOUSLY TRACKED OLAS TRANSMITTER

- To track a previously tracked OLAS transmitter it needs to be switched on and brought into 'Near' proximity which is around 3 metres away. If it is not automatically tracked move it closer to the OLAS Guardian hub.
- When the OLAS transmitter is automatically tracked the OLAS Guardian hub will beep twice.

6. TRACKING AN OLAS TRANSMITTER USING THE OLAS MOBILE APP

- Connect the OLAS mobile app to the OLAS Guardian.
- Navigate to the home screen.
- Select + **Add Transmitter**.
- The OLAS Guardian hub will beep twice to indicate a tag has been tracked.

7. CHECKING LOGGED OLAS TRANSMITTERS (without the OLAS mobile app)

- Press the control switch once.
- The number of tracked OLAS transmitters is indicated with a single beep sound signal and one green flash per transmitter. Up to 25 transmitters can be tracked.

8. CHECKING LOGGED OLAS TRANSMITTERS (with the OLAS mobile app)

- Open the OLAS mobile app.
- Select the OLAS Guardian from the device selection page.
- All OLAS transmitters that are being tracked will be indicated on the home page.
- Use the homepage to check the battery life of the OLAS transmitters.

9. OLAS MOBILE APP FEATURES (basic)

- Customise the OLAS transmitters name.
- Check OLAS tags battery status.
- Enable/disable cut-off switch (Relay) for individual OLAS transmitters.
- Stop tracking individual OLAS transmitters.
- Switch between Tracking and Standby.

10. STANDBY MODE - Stop tracking

1. Press the control switch for 2 seconds, release the control switch after a single beep.
2. When in Standby state the control switch will illuminate red.
3. Press the control switch once to restart tracking.

NOTE: if you have removed an OLAS transmitter whilst the OLAS Guardian is in Standby it will no longer be tracked.

11. SWITCHING OFF THE OLAS GUARDIAN

- The OLAS Guardian can be switched off at any point by pressing the control switch for 4 seconds.
- The control switch will illuminate red with a long beep before switching off.

12. STOP TRACKING AN OLAS TRANSMITTER (without the OLAS mobile app)

- To remove any OLAS transmitter without using the OLAS app the OLAS Guardian will need to be switched off.
- Once the OLAS Guardian is switched off, switch off the transmitters you wish to stop tracking. The OLAS Guardian will 'forget' these devices.
- Switch the OLAS Guardian back on and it will track those OLAS transmitters that are still switched on and within range.

13. STOP TRACKING OLAS TRANSMITTER (with the OLAS mobile app)

- Open the OLAS mobile app.
- Select the OLAS Guardian from the device selection page.
- All OLAS transmitters that are being tracked will be indicated on the home page.
- Click on the transmitter you wish to stop tracking and press the Activity toggle.

14. LOW BATTERY ALERT

- A low battery alert will be initiated by the OLAS Guardian when an OLAS tag's battery level goes below 20%.
- The alert is indicated by a red flash every 10 seconds on the control switch and the OLAS Guardian Hub.
- The alert will remain until the battery is charged (OLAS T2) or changed (OLAS Tag).
- You can check which OLAS tag has low battery using the OLAS app.
- Once you have located the tag you can:
 - a. Move the OLAS Guardian to Standby then charge or change the battery and restart tracking.
 - b. Switch off the OLAS Guardian, switch off the OLAS tag and then restart the OLAS Guardian.
 - c. Stop tracking the OLAS tag in the OLAS mobile app and then switch off the OLAS tag.

15. DEFAULT RECOVERY MODE FOR RELAY TAGS

- When an OLAS transmitter goes out of range an alert will sound on the OLAS Guardian hub and any connected MOB alert devices.
- The OLAS Guardian control switch will go red and the vessel's stop system relay will be activated for 7 seconds. This is normally sufficient time for the engine to stop.
- After 7 seconds the relay is deactivated, and the engine can be started again allowing a rescue to be performed.
- Press the control switch once to acknowledge the alarm and the OLAS Guardian hub will revert to Tracking any remaining transmitters or Inactive if no other transmitters are being tracked.
- Once the OLAS transmitter is back on the vessel and within 1 metre of the OLAS Guardian tracking will automatically start again.

16. OLAS MOBILE APP FEATURES (advanced)

- a. **Detection Time (seconds)** - adjusting the detection time allows a period of time where an OLAS transmitter can reconnect silently, preventing any alert from occurring. This may be preferable on larger vessels with multiple cabins where there is an increased chance of signal being blocked.
- b. **Alert Delay (seconds)** – adjusting the alert delay time changes the amount of time the operator has before the MOB alert and relay is activated. This may be preferable on larger vessels where there is increased chance of signal being blocked. During the 'Alert Delay' period an alert will sound to indicate signal has been lost. During this period if the control switch is pressed it manually overrides the cut-off for 30 seconds allowing the OLAS transmitter to be brought back into range.
 - i. Select the menu tab in the top left-hand corner of the home screen (3 lines).
 - ii. Select 'Alert Settings'.
 - iii. Use the slider to select the 'Detection Time' or 'Alert Delay' period.
- c. **Solo Mode (minimum 2G connection required)** – designed for boaters operating on inshore waters or on connected vessels. The OLAS mobile app inputs the vessel information manually entered during setup and sends a distress SMS with the vessel name, time, location, and contact number.
 - i. Select the transmitter on the home screen.
 - ii. Select 'Solo Mode'.
 - iii. Enter in 'Your Number', this will be sent to your emergency contact so that they can try to make contact after receiving an alert.
 - iv. Enter in your 'Emergency Number', this number will receive your MOB alert and location. You must use your country code prefix e.g. UK(+44) US(+1).
 - v. Select your 'Message Delay' period, this is the amount of time before the MOB alert SMS is sent. A longer period allows more time for self-rescue. A minimum of 1 minute is advised.
 - vi. The OLAS app will indicate when an alert message has been sent. If a message is sent accidentally ensure you immediately contact your emergency contact and cancel the alert.
- d. **Overboard recovery aids** – The GPS location was stored on the OLAS mobile app when the MOB alert occurred.
 - i. The MOB screens indicate where the MOB occurred in decimal format.
 - ii. The MOB fixed location is displayed on the map along with the vessels current location.
 - iii. An alert SMS with the incidents location and time can be manually sent.
 - iv. Quick access to call your emergency contact number.

17. OLAS SMART LOCK / IGNITION IMMOBILISER

DO NOT USE ON DIESEL ENGINES

OLAS Smart Lock is a theft deterrent and secondary locking system.

When OLAS Smart Lock is enabled, if the OLAS Guardian is switched off and back on it will lock the vessel's emergency stop system, preventing the engine from being started.

OLAS Smart Lock can be unlocked using the OLAS mobile app or an allocated Smart Key.

OLAS Smart Lock is to be used in conjunction with the engine connection cable and can only be used if the OLAS Guardian has been wired into the vessel's engine stop system.

OLAS Smart Lock is designed for use on Outboard engines only.

Do not use OLAS Smart Lock with inboard diesel engines or Volvo Penta engines.

Ultimate Sports Engineering Ltd and affiliated resellers cannot be held responsible if a theft occurs whilst OLAS Smart Lock is being used.

OLAS Smart Lock Setup.

1. Connect the OLAS mobile app to the OLAS Guardian as normal.
2. Enable OLAS Smart Lock – this means the vessel's emergency stop system will activate automatically when the OLAS Guardian is switched OFF and ON.
 - i. Select the menu tab in the top left-hand corner of the home screen (3 lines).
 - ii. Select 'Immobiliser Settings'.
 - iii. Select 'Enable Smart Lock'.
 - iv. Set your new PIN Code.
 - v. Confirm your PIN Code.
 - vi. Email your PIN code so that it can be found later if the code is forgotten.
 - vii. Press the back arrow at the top left of the screen to return to the home page.
 - viii. You will see an unlocked gold padlock in the top right corner. This indicates that Smart Lock is enabled but unlocked.
3. Manually activating OLAS Smart Lock with the OLAS mobile app.
 - i. Click on the padlock.
 - ii. Input your PIN Code.
 - iii. The OLAS Guardian will lock. If the engine is running it will be stopped.
4. Manually unlock OLAS Smart Lock with the OLAS mobile app.
 - i. Reconnect the OLAS mobile app to the OLAS Guardian.
 - ii. Enter your PIN Code.
 - iii. OLAS Smart Lock will unlock and the engine can be started.
5. Smart Key allocation – allocating a Smart Key means that if the OLAS Smart Lock is locked and a Smart Key is brought within 2 metres it will automatically unlock.
 - i. Connect the OLAS mobile app to the OLAS Guardian.
 - ii. When on the home screen click the tag and click on the Smart Key toggle.
 - iii. A key icon will appear on the right hand side of the transmitter on the home screen.
6. OLAS T2 Smart Lock control – if an OLAS T2 tag is allocated as a Smart Key it can be used to lock and unlock OLAS Smart Lock remotely.
 - i. Allocate an OLAS T2 tag as a Smart Key.
 - ii. Triple click the OLAS T2 tag to switch it off. This will lock OLAS Smart Lock, stopping the engine if it is running.
 - iii. To unlock Smart Lock double press the OLAS T2 and bring it within 2 metres of the OLAS Guardian hub and it will automatically unlock.

17. LIMITATIONS

The connection signal can be blocked by carbon and metal. Operation on carbon or metal boats will require the Guardian box to be mounted externally.

SPECIFICATION

Power/Current	10-32V/13-17mA
Vessel length	50ft
Tracked Transmitters	up to 25
Weight	100 grams
Size	92 x 90 x 38 mm
LED output	55lm
Buzzer output	85db

SOUND AND LIGHT INDICATIONS

OPERATION	ACTION/REACTION
Turning ON	Control switch: Green Box: Low red Buzzer: ON
No OLAS transmitters in range	Control switch: Green / Red alternating Buzzer: 8+ beeps incremental every minute up to 30 minutes
New transmitter tracked	Control switch: Red double flash Buzzer: Double Beep
Checking logged OLAS transmitters	Control switch: Red flash per tracked tag Buzzer: Single beep per tracked tag
Pre alert warning	Control switch: Green Buzzer: Rapid beep
MOB Alert	Control switch: Red constant Box: High red constant Buzzer: Beep every second
Standby	Control switch: Red continuous
Low battery alert <20%	Control switch: Red flash every 10 seconds Box: Red flash every 10 seconds
Low battery alert <10%	Buzzer: Beep every 5 minutes

CERTIFICATIONS AND DECLARATIONS (Guardian)

RoHS2 DIRECTIVE 2001/65/EU
FCC/CFR 47:Part 15B
15.109 and 15.107
ICES 003:Issue 7
EN 60945:2002
IEC 60945:2002 (Fourth edition – 2002)
ETSI EN 300 328:v2.2.2†
EN 60945:2002
IEC 60945:2002 (Fourth edition – 2002)
EN 301 489-1:v2.2.3
EN 301 489-17:v3.2.4
Compass safe distance
EN 60945:2002
Contains Transmitter module FCC ID: 2AC7Z-ESPPICOMINI

CERTIFICATIONS AND DECLARATIONS (OLAS Tag)

RoHS2 DIRECTIVE 2011/65/EU compliant
(RED) (2014/53/EU)
The full text of the EU declaration of conformity is available at the following internet address:
www.exposuremarine.com

WARNING & WARRANTY

Any change or modification to this unit not expressly approved by the party responsible for compliance could void the user's authority to operate the equipment.

This equipment has been tested and found to comply with the limits for a Class B digital device, pursuant to Part 15 of the FCC Rules. These limits are designed to provide reasonable protection against harmful interference in a residential installation. This equipment generates, uses and can radiate radio frequency energy and, if not installed and used in accordance with the instructions, may cause harmful interference to radio communications. However, there is no guarantee that interference will not occur in a particular installation. If this equipment does cause harmful interference to radio or television reception, which can be determined by turning the equipment off and on, the user is encouraged to try and relocate the module.

This device complies with part 15 of the FCC Rules. Operation is subject to the following two conditions: (1) This device may not cause harmful interference, and (2) this device must accept any interference received, including interference that may cause undesired operation.

Ensure your phone or tablet has maximum volume, charged battery, GPS ON and Bluetooth ON.

Exposure Lights / Ultimate Sports Engineering Ltd. accept no liability for any injuries or other damages arising from the use of their product in any circumstances.

We design them. We make them. We are here to help.

If you are experiencing any problems with your OLAS product or accessories, please contact us directly at:

Service: +44 (0)1798 839300 | service@use.group | olas@use.group

Alternatively contact your Exposure OLAS dealer or distributor.

Check web for details <https://www.exposure-use.com/Brands/Exposure-OLAS/Product-Support>

TERMS & CONDITIONS

The OLAS systems are products from Ultimate Sports Engineering Ltd.

OLAS wireless systems utilise OLAS transmitters (OT) and OLAS receivers (OR).

OLAS transmitters consist of EXPOLASTAG, EXPOLASFLOATON and EXPOLAST2.

OLAS receivers include the EXPOLASN2K, EXPOLASGUARDIAN, EXPOLASCORE, EXPOLASEXTENDER and the OLAS mobile application (OLAS app). Before using any OLAS wireless system it is imperative that you read the DISCLAIMER and the LIMITATION OF LIABILITY which follows. There is legal presumption that by using OLAS wireless systems you have read, understood and accepted the DISCLAIMER and the LIMITATION OF LIABILITY statement.

Setup

Start and setup all OLAS systems before you leave the dock and ensure all OTs are connected. Connecting the OLAS app allows visual indication of connected OTs. Check the battery level of OLAS tags using the OLAS app. Check the battery level of OLAS Float-On's using the inbuilt colour coded battery indicator.

The OLAS App

Ensure GPS is running in the background on your mobile device. Keep your mobile device plugged in to a charger as GPS drains the battery. It is advised that the app is running in the foreground to enable maximum response time. It can take up to 30 seconds for the system to respond if the phone is in locked mode.

Test the Connection Whilst In Dock

Test the connection between the OR and the OT by leaving the OR in its planned location and walk the OT to the furthest point on the vessel. Check that all OTs being used are working correctly by submersing them in more than 4 inches of open water which will activate the alarm on the receiver.

Advice

As soon as a MOB situation occurs ensure a crew member keeps visual contact and points at the MOB. Contact the emergency services and give them the co-ordinates from your vessel's GPS navigation system and the time since the MOB occurred. Use OLAS Systems frequently as a practice aid for a MOB situation.

Disclaimer:

OLAS wireless systems are an aid only and should be used alongside existing safety products and procedures. They should not be used for navigation or lifesaving procedures. The OLAS app GPS coordinates cannot be relied upon to be accurate. Whilst accuracy of between 10-30 metres can be achieved, many factors can cause larger variations. The OLAS app cannot and does not take the external environment into consideration. Wind, tide, current and other factors will affect the position of the MOB.

The OLAS app can only assist you in getting back to the position that the automatic alert was issued. The OLAS app is not warranted to be accurate. GPS reception is variable and cannot be relied on. The phone can take up to 40 seconds to get a good GPS lock even when GPS connectivity is available.

The OLAS app will be more accurate if already running for 1 minute before obtaining the GPS location. It is advised that the app is running in the foreground to enable maximum response time. It can take up to 30 seconds for the system to respond if the phone is in locked mode. The OLAS App should only be used to complement other MOB methods and procedures.

Limitation of Liability:

In no event shall Ultimate Sports Engineering Ltd or its members, representatives or suppliers be liable for any damages whatsoever (including, without limitation, loss of property, personal injury, lost revenue, lost profits, loss of goodwill, business interruption) arising from or related to the use or inability to use or reliance on any OLAS wireless system, even if Ultimate Sports Engineering Ltd or its representatives or agents have been advised of the possibility of such damages. Some jurisdictions prohibit the exclusion or limitation of liability for implied warranties or consequential damages or incidental damages, so the above limitation may not apply to you. You may have other legal rights that vary from jurisdiction to jurisdiction. To the extent any liability is found, in no event will the liability of Ultimate Sports Engineering Ltd, its members, representatives or suppliers exceed the amount paid for the OLAS wireless system inclusive of the OLAS transmitters and receivers.

Patent Notice:

The OLAS wireless systems and associated products may be covered by patents or patent pending applications.

Credits Product: Ultimate Sports Engineering Ltd

Contact Address

Ultimate Sports Engineering Ltd
Unit 4 Bury Mill Farm
Bury
West Sussex
RH20 1NN
United Kingdom

